



1311 Memorial Parkway NW, Suite 300 • Huntsville, AL 35801  
Phone: 256-535-5008 • Toll-free: 866-254-7630 • Fax: 256-535-2476

### Top Reasons for Referral to Center

Flow Restriction . . . . .	22%
Clotted Access . . . . .	8%
Determination of Access Placement . . . . .	8%
Bleeding . . . . .	6%
Malfunctioning AV Fistula . . . . .	6%

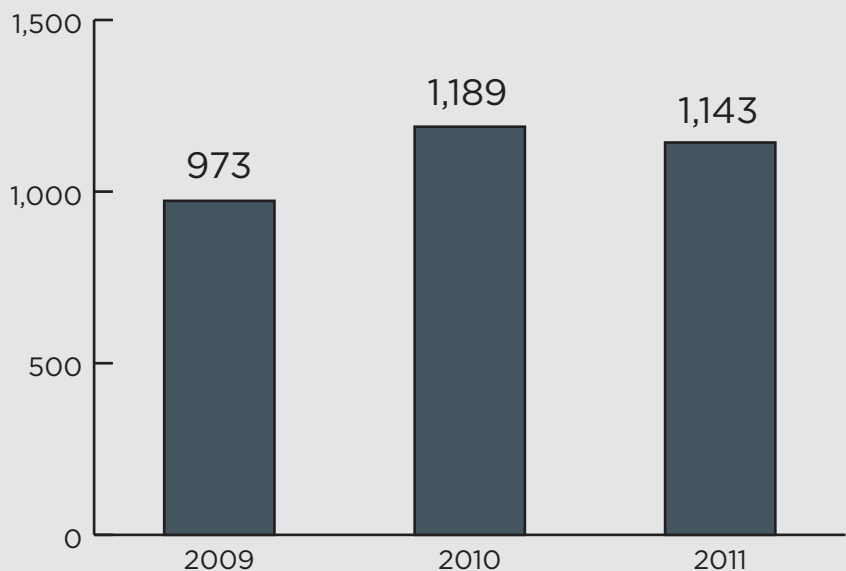
## 2011 Outcomes Report

We are pleased to share our 2011 clinical outcomes with you. Our goal is to always ensure the best possible outcomes for every patient we treat. Our success in part is a result of your trust in us, and we thank you for allowing us to continue to provide superior care to your patients. Should you have any questions, please call our center at 256-535-5008.

### Patient Demographics

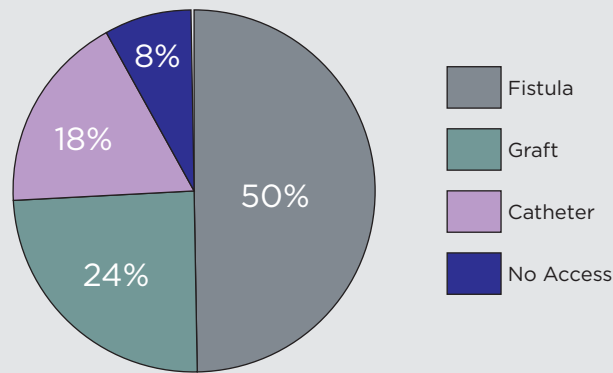
Mean age of patients treated:	63 years
Gender mix:	54% male 46% female
Diabetic patients:	58%

### Total Patient Encounters

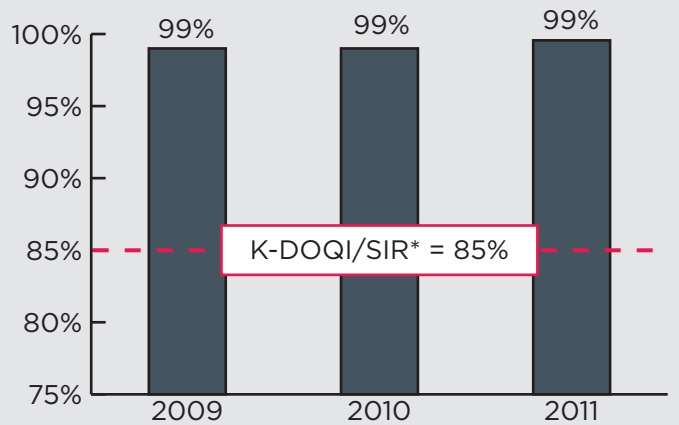


## Access Types

Patients presenting for treatment in 2011

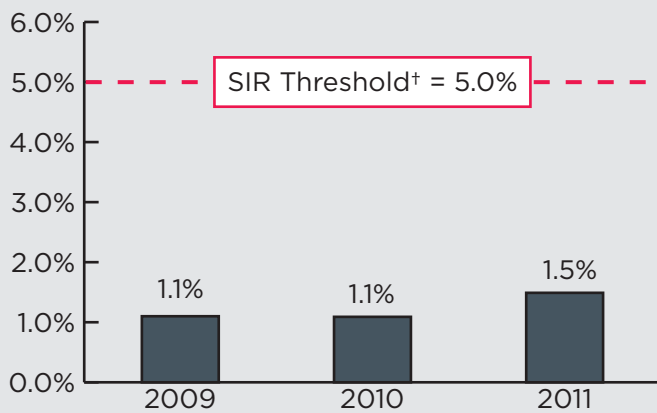


## Overall Procedure Success Rate

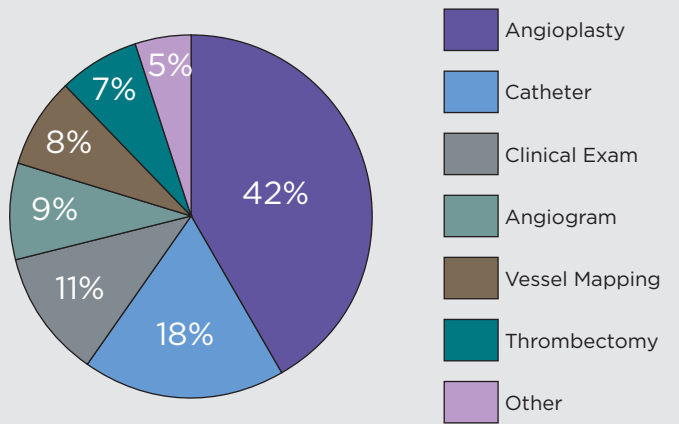


## Total Complications

Major complications = 0.1%

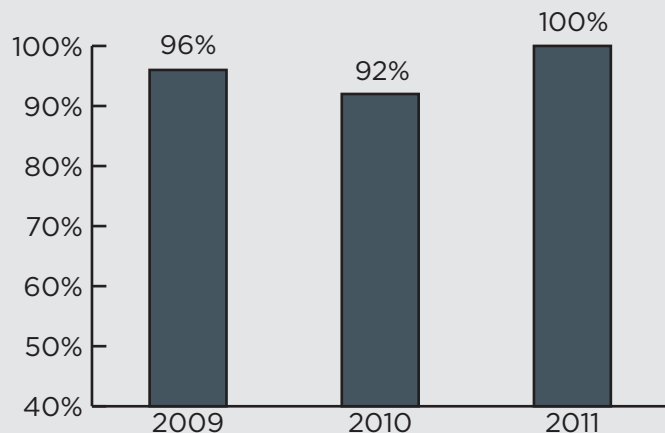


## Most Common Procedures Performed



## Patient Satisfaction Survey Results

Overall Ratings of Very Good or Excellent



## What Our Patients Say

Data from 2011 Patient Satisfaction Survey

*"I was very satisfied with my last visit to NEPHCON. The doctors and the staff members are extremely efficient and caring. They are all very friendly and generous with their time. My only wish is that all of my doctor or hospital visits were this positive."*

\*Using Society of Interventional Radiology (SIR) definition of success-resumption of normal dialysis for at least one session for declots and catheter placements, <30% residual stenosis on angioplasties. Graft declot success rate is 94%.

†Reflects aggregate of major and minor complications and is derived from literature, SIR committee and SIR HI-IQ system database.